

**AVAILABLE**

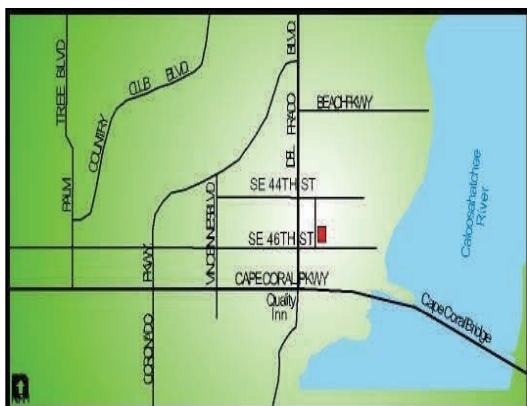
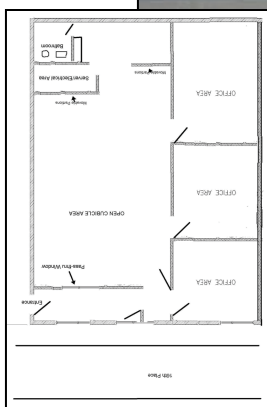


**(239) 333-4800**

# FOR LEASE-OFFICE

## 4529 SE 16th Place

DOWNTOWN CAPE CORAL



- **Downtown Zoning CCC**
- **Move in Ready Unit (1000 sf)**
- **Open Floor Plan**
- **Building Signage**
- **1,000 Sq. Ft. Leasable**
- **Private Parking and Good Street Parking**
- **Close proximity to Del Prado, Cape Coral Bridge and Downtown Cape Coral**

**Contact: Tim Colen**

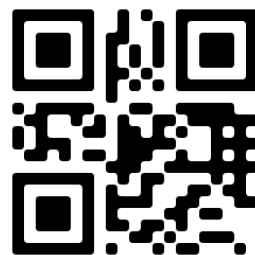
Phone: (239) 333-4800  
tcolen@crefl.com

**Renee Ward**  
rward@crefl.com

www.CREFL.com

**LEASE PRICE:**

# \$14.00

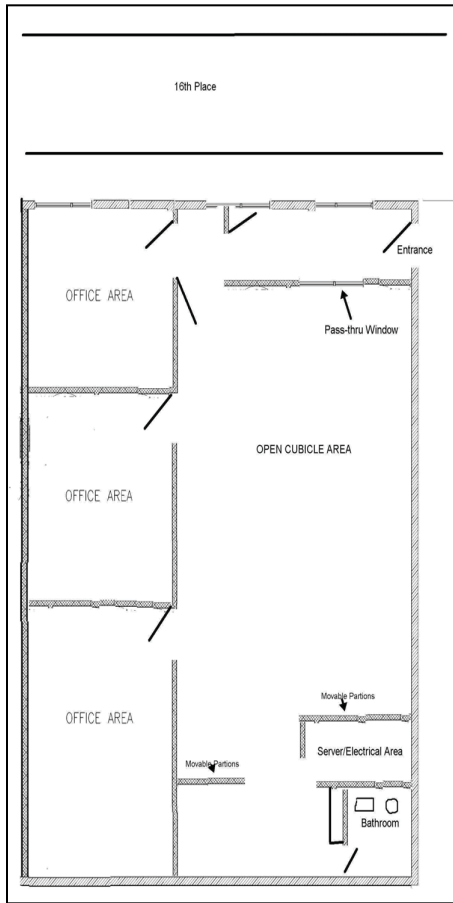


**AVAILABLE**

**For Additional Information Visit [www.Crefl.com](http://www.Crefl.com)**



**(239) 333-4800**



**INTERIOR PHOTOS**



**One Source Commercial Realty 4575 Via Royale, Suite 109, Ft. Myers, FL 33919**