

AVAILABLE

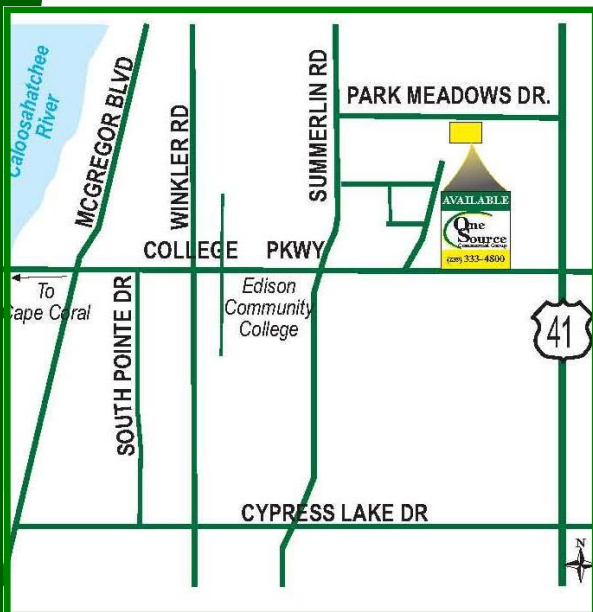


(239) 333-4800

FOR LEASE

1910 PARK MEADOWS

\$12 FULL SERVICE LEASES-1ST FLOOR



- Size: 10,673 ± Sq. Ft. Bldg. on 1.1 acres
- Open Floor Plans & Glass Cubicles
- Only 1250-3750 Sq. Ft. Entire First Floor
- Ample and Covered Parking
- All Rents Include Electric and Water
- Configured For Multi Tenant Occupation
- Location - Location - Location!
- Between Summerlin & US 41

Contact: Tim Colen

(239) 333-4800
tcolen@crefl.com

Renee Ward
RWARD@crefl.com

www.CREFL.com

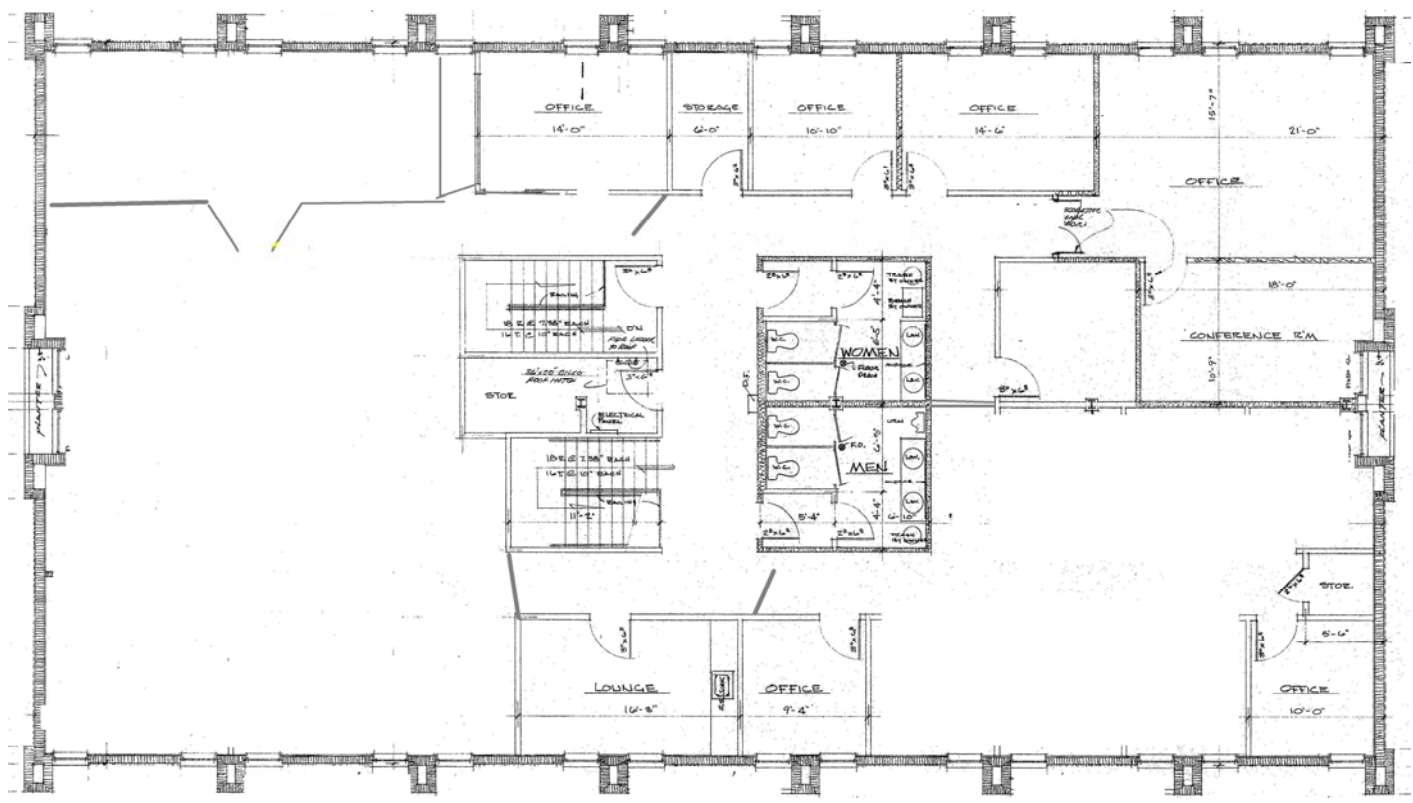
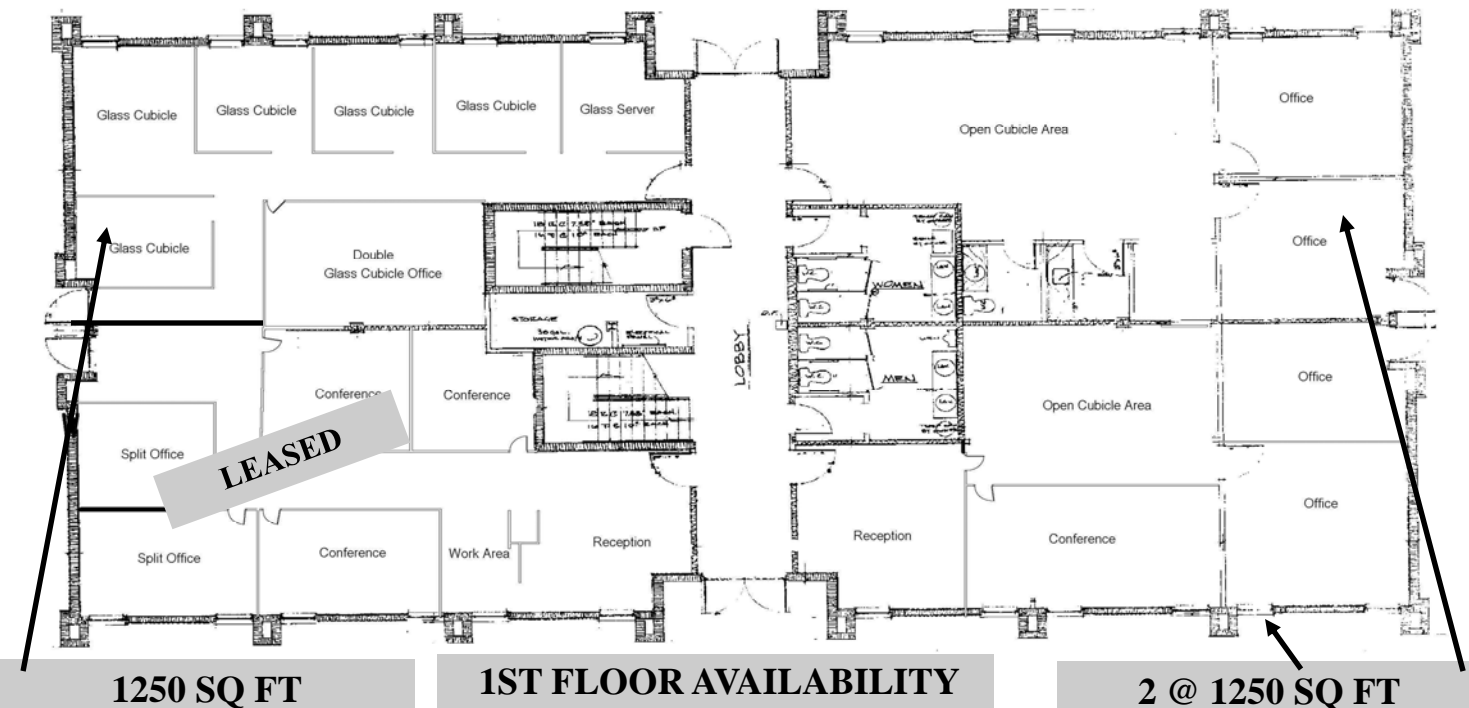
Lease Rates Starting at:

\$12.00 psf

(Gross Lease)



**FOR MORE INFORMATION CONTACT:
ONE SOURCE COMMERCIAL 333-4800 WWW.CREFL.COM**



FULLY LEASED