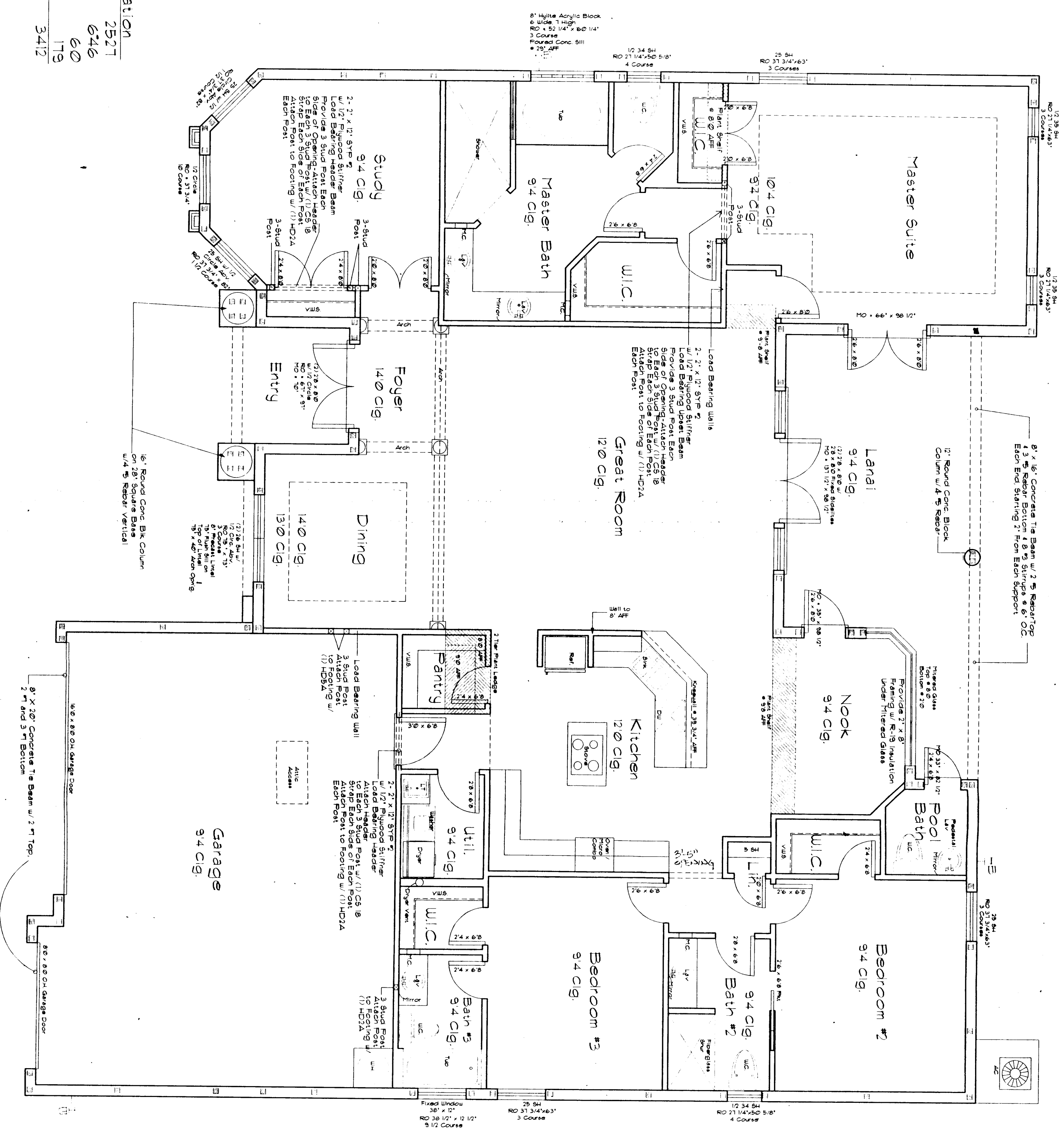


Area Tabulation

Living	2521
Garage	646
Entry	60
Lanai	179
Total	3412

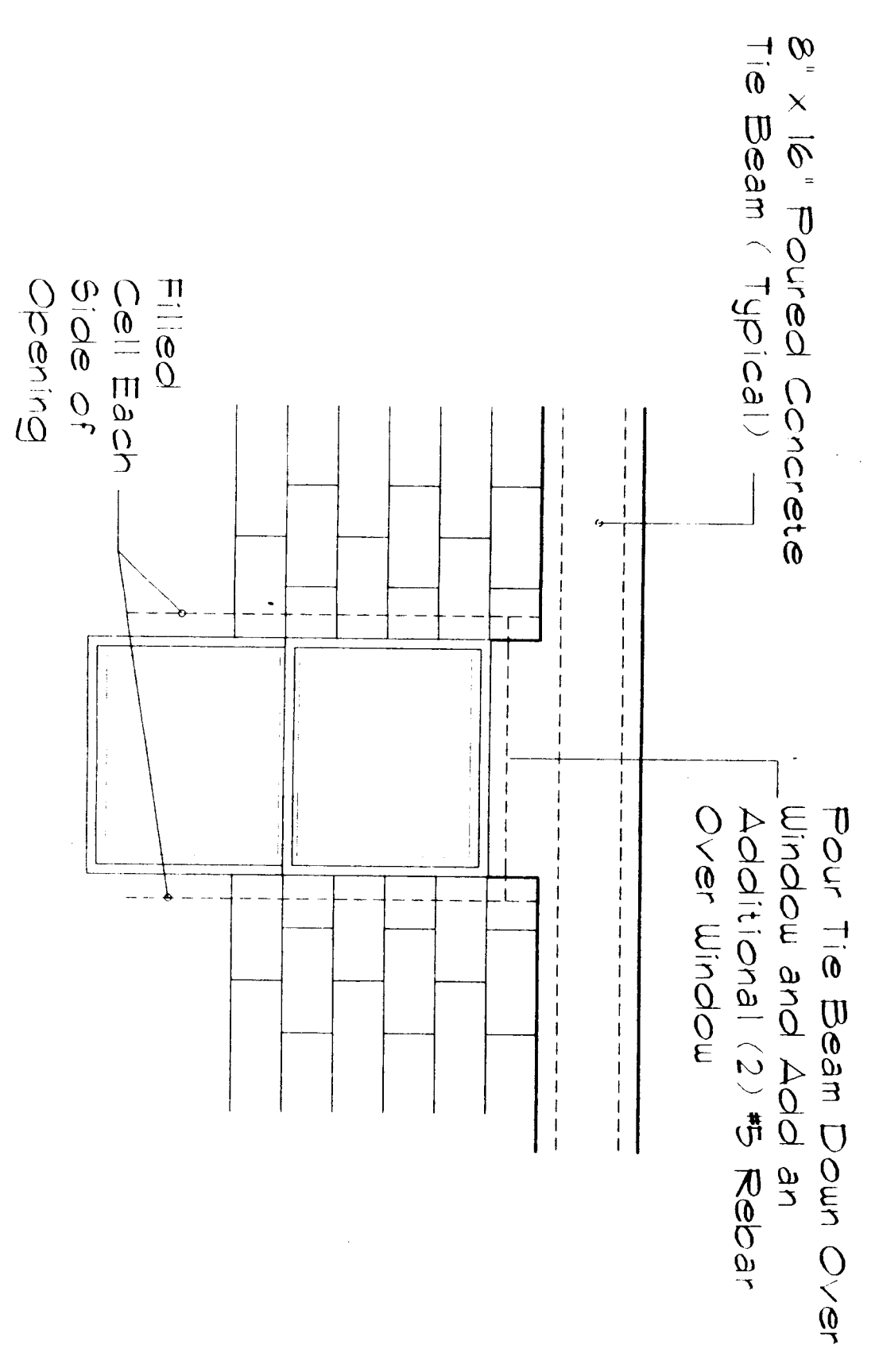


BEARING AND NON-BEARING FRAME WALL TO MASONRY CONNECTION

5/8" x 4 1/4" RAMBET REDHEAD
 DYNABOLT SLEEVE ANCHOR W/ HEX NUT
 @ 36" O.C. MAXIMUM. START @ FROM TOP
 OF THE BEAM AND @ FROM FINISHED SLAB

BEARING HEADER NAILING PATTERN

HEADERS IN LOAD BEARING FRAME WALLS
 SHALL BE NAILED W/ 3 ROWS
 16d NAILS @ 8" O.C. STAGGERED EACH PLY.
 LOWER TOP PLY SHALL BE ATTACHED TO
 HEADER W/ 2 ROWS OF 16d NAILS @ 4" O.C.
 STARTING 1 1/2" FROM HEADER ENDS



Plant Shelf @ Nook/Entrance to Mast. Bedroom

Plant Shelf over Master Closet

Plant Shelf over Pantry in Kitchen

DOUBLE ENTRY DOORS REQUIRE REVISION

3 Hinges Each Side and 2 Top
 Middle & Bottom Locking Bolts

Window Pressure Loads
110 MPH
Mean Roof Height 0' - 15'
Windows 371 + 321 Psf
Doors 350 + 316 Psf
Garage Doors 236 + 212 Psf

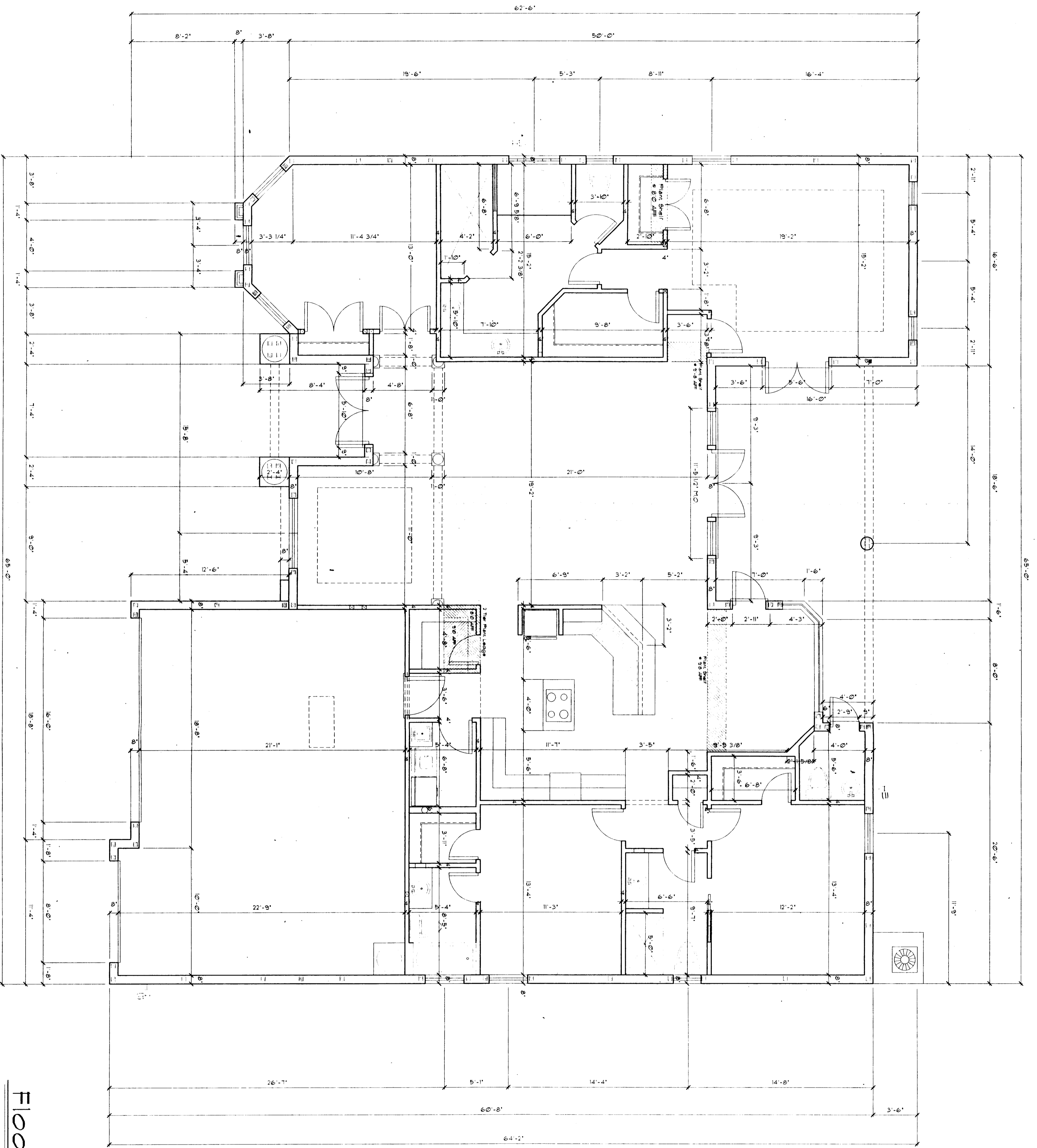
Floor Plan w/ Callouts

1/4" = 1'

<p>Legend Custom Builders, Inc. "A Home is Just a Home but a Legend is Forever" PO Box 07388 • Fort Myers, FL 33919 • (941) 437-5288</p>	<p>The Marquette Cape Coral, Florida Lots 17 & 18 Block 3267 3705 Chiquita Blvd.</p>	<p>Val di Valentin, AIA 5835 Sunnyside Lane Fort Myers, FL 33919 (941) 433-4899</p>	<p>Niles Design Group, Inc. Residential Designers & Planners 5235 Ramsey Way Unit 12 Fort Myers, FL 33907 Phone (941) 275-7100 Fax (941) 275-1166 E-Mail annette@nilesdesign.com</p>
----------------------------------------------------------------------------------------------------------------------------------------------------------------------------------------	----------------------------------------------------------------------------------------------------------------------------------------	----------------------------------------------------------------------------------------------------------------------------	------------------------------------------------------------------------------------------------------------------------------------------------------------------------------------------------------------------------------------------------------------------

DATE	1/31/01
DESIGN	JM/JMF
REVISIONS	
8/27/01	ANN
8/27/01	ANN

6 of 9



Floor Plan w/ Dimensions

REVISION

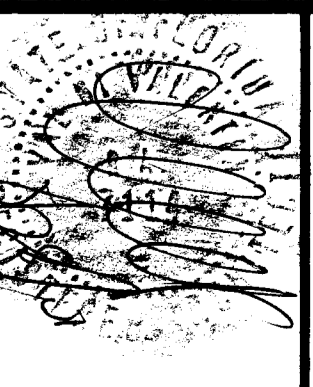
Handwritten signature

DATE	1/31/01
DRAWN	JM/JTF
JOB#	
REVISIONS	
6/27/01	AMN
8/21/01	AMN

Legend
 Custom Builders, Inc.
 "A Home is Just a Home but a Legend is Forever"
 PO Box 07388 • Fort Myers, FL 33919 • (941) 437-5288

The Marquette
 Cape Coral, Florida
 Lots 17 & 18 Block 3267
 3705 Chiquita Blvd.

Val di Valentin, AIA
 5835 Sunnyside Lane
 Fort Myers, FL 33919
 (941) 433-4899



NDES
 Nilles Design Group, Inc.
 Residential Designers & Planners
 5235 Ramsey Way Unit 12
 Fort Myers, FL 33907
 Phone (941) 275-7100 Fax (941) 275-1166
 E-Mail annette@nillesdesign.com