

**AVAILABLE**

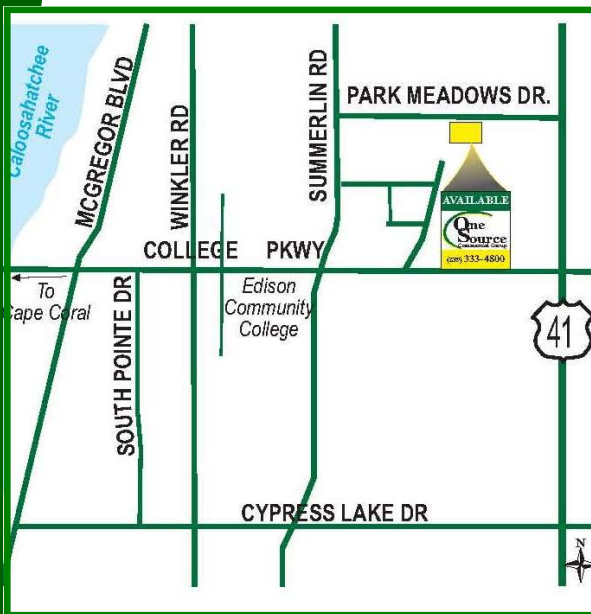


**(239) 333-4800**

# FOR SALE

## 1910 PARK MEADOWS

### \$750,000 at \$75.00 PSF



- **Size: 10,673 ± Sq. Ft. Bldg. on 1.1 acres**
- **Open Floor Plan 2nd Floor**
- **Totally renovated 2nd floor and partial 1st floor**
- **Ample Parking (Some Covered)**
- **Configured For Multi/Single Tenant**
- **Some Furniture and Cubes Will Stay**
- **Owner Financing Available**
- **Between Summerlin & US 41**

**Contact: Tim Colen**

Phone: (239) 333-4800  
tcolen@crefl.com  
www.CREFL.com

**SALE PRICE:**

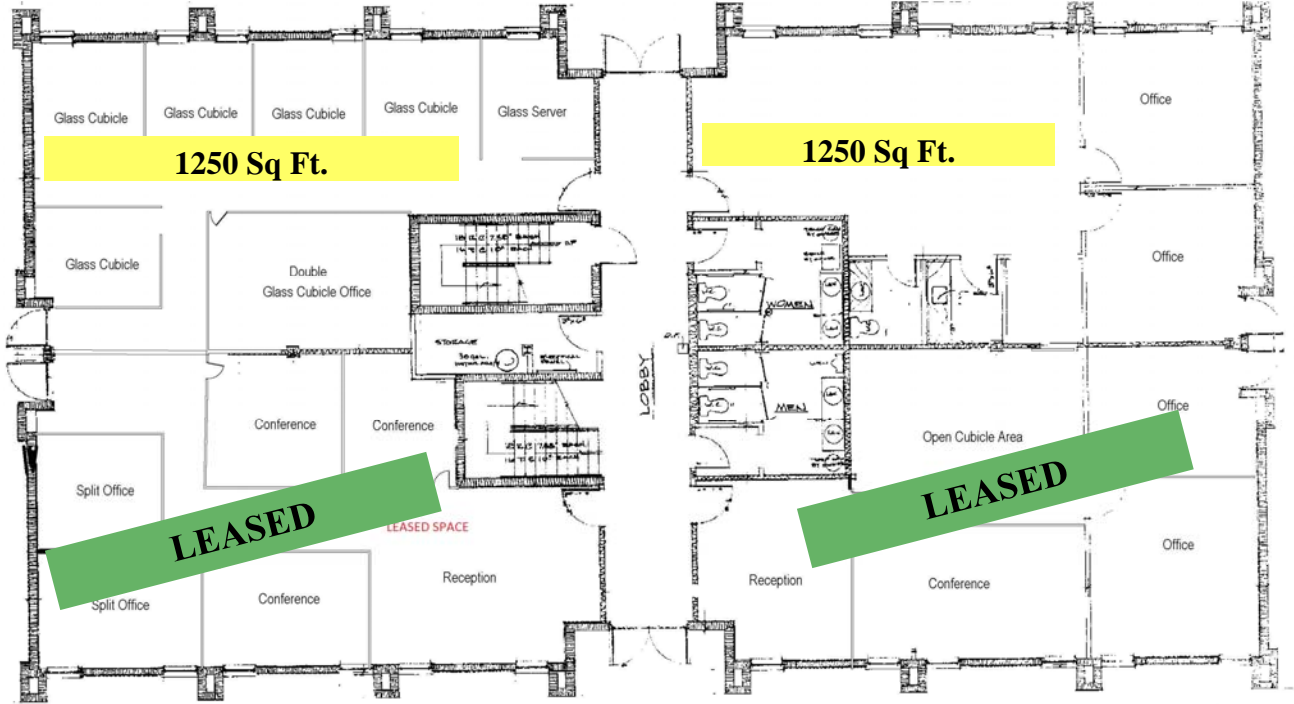
**\$750,000**

**\$75.00 PSF**

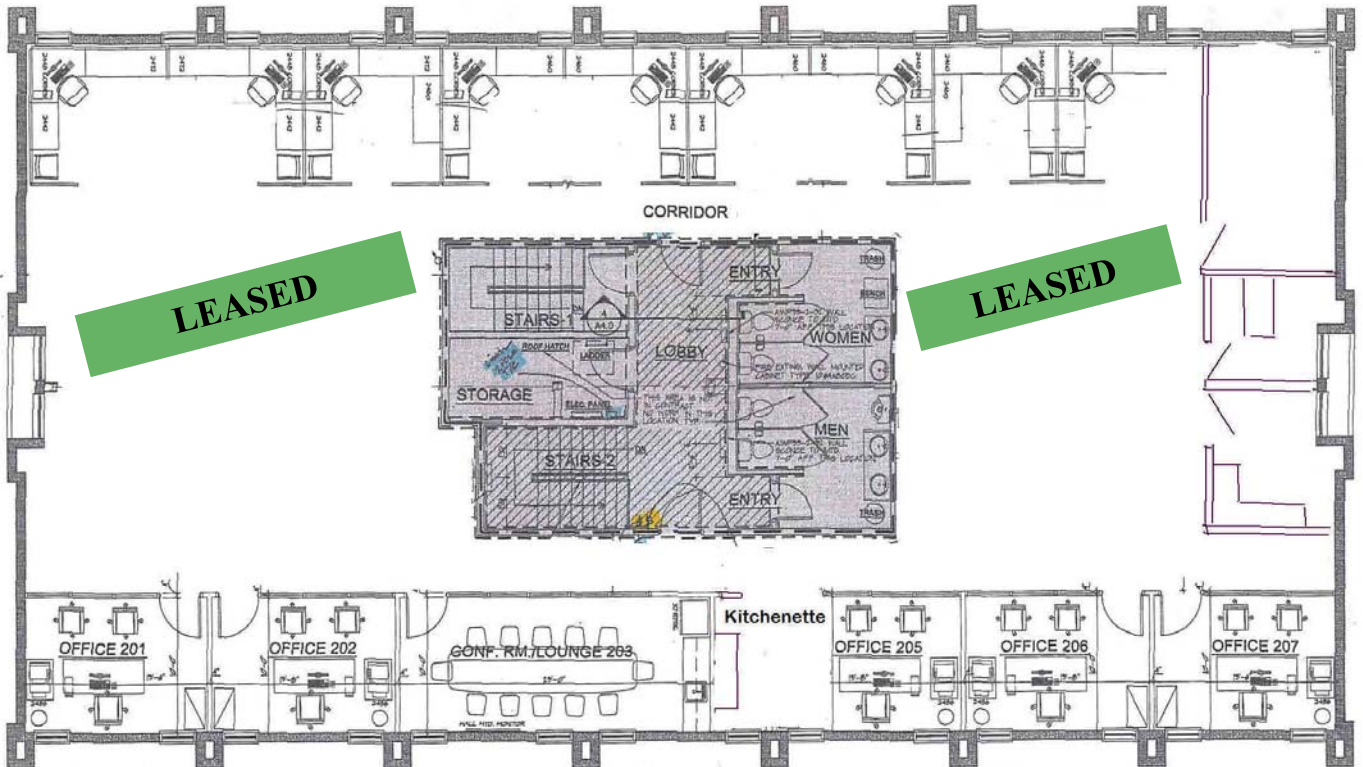


FOR MORE INFORMATION CONTACT:  
**ONE SOURCE COMMERCIAL 239-333-4800**

**WWW.CREFL.COM**



**1st Floor**



**2nd Floor**

**LEGEND**

- Existing Exterior to remain
- Existing Interior to remain
- New Construction - Lobby
- 1 Layer of 5/8" type "C" pyp. bd. add'l see detail this set, 40A.0
- Existing walls to structure above, see detail this set, 40A.0

**FLOOR PLAN**